



# INTERNATIONAL MAPPING ON PACKAGING'S LABELS FOR SEPARATE COLLECTION

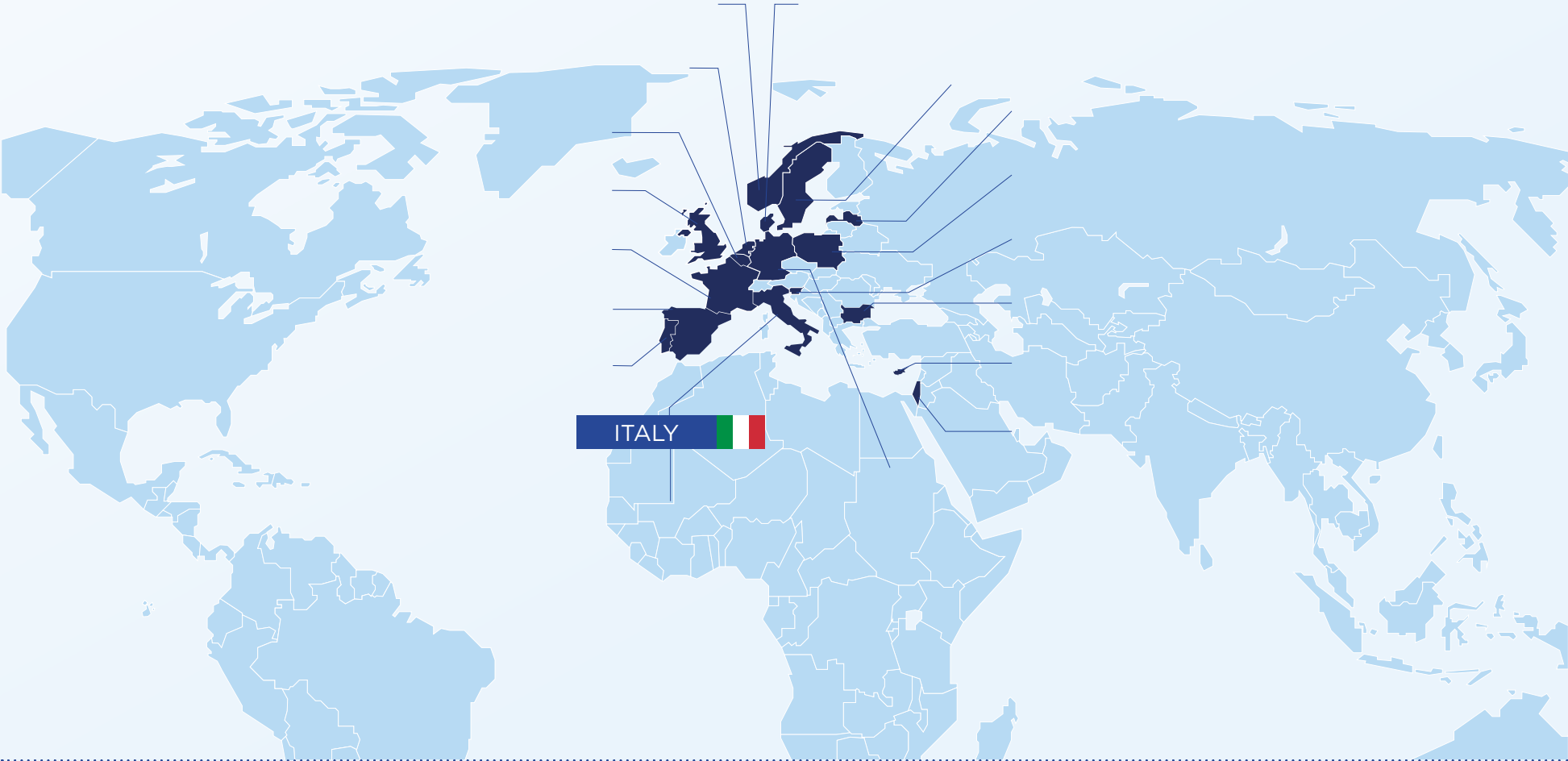
---

FEBRUARY 22<sup>nd</sup>, 2023

# COUNTRIES OVERVIEW



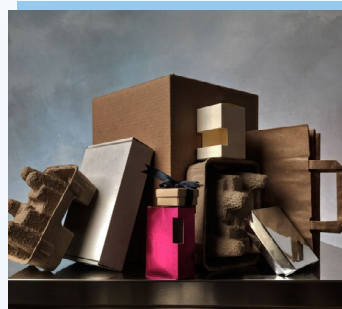
Select a country on the map



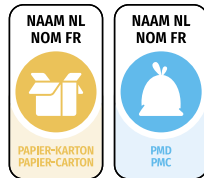
# BELGIUM



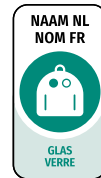
PLASTIC



PAPER, CARDBOARD,  
BEVEREDGE CARTONS



GLASS



METALS



WOOD



SOURCE



MANDATORY

NO

DIGITAL LABELLING

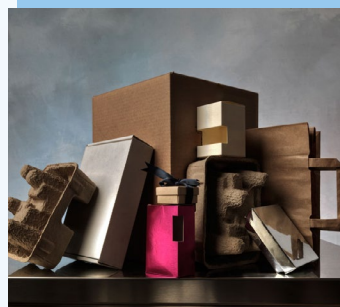


# BULGARIA



**PLASTIC**

Abbreviation	Numbering
PET	1
HDPE	2
PVC	3
LDPE	4
PP	5
PS	6



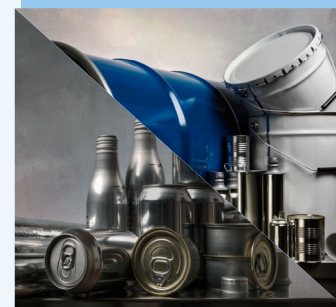
**PAPER, CARDBOARD, BEVEREDGE CARTONS**

Abbreviation	Numbering
PAP	20
PAP	21
PAP	22



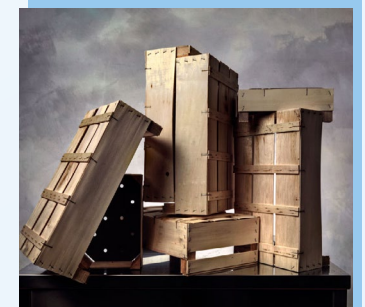
**GLASS**

Abbreviation	Numbering
GL	70
GL	71
GL	72



**METALS**

Abbreviation	Numbering
FE	40
ALU	41



**WOOD**

Abbreviation	Numbering
FOR	50
FOR	51

**SOURCE**



**MANDATORY**

**YES**

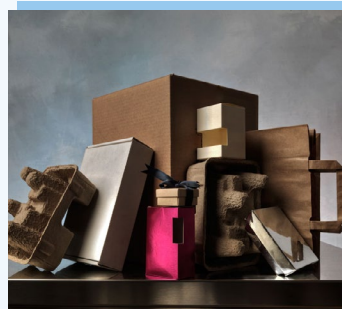
**DIGITAL LABELLING**



# CYPRUS



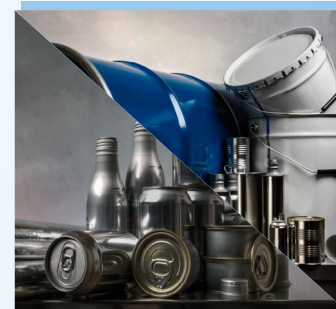
PLASTIC



PAPER, CARDBOARD,  
BEVEREDGE CARTONS



GLASS



METALS



WOOD



SOURCE



MANDATORY

NO

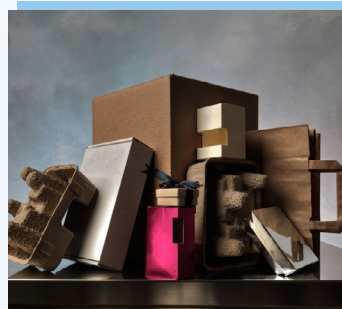
DIGITAL LABELLING



# DENMARK



PLASTIC



PAPER, CARDBOARD,  
BEVEREDGE CARTONS



GLASS



METALS



WOOD



SOURCE



MANDATORY

NO

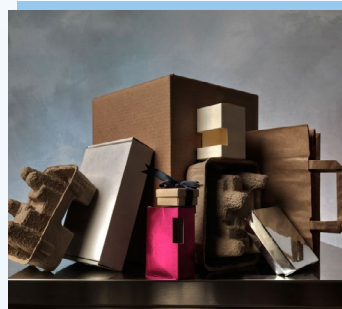
DIGITAL LABELLING



# FRANCE



PLASTIC



PAPER, CARDBOARD,  
BEVEREDGE CARTONS



GLASS



METALS



WOOD



SOURCE



MANDATORY

YES

DIGITAL LABELLING

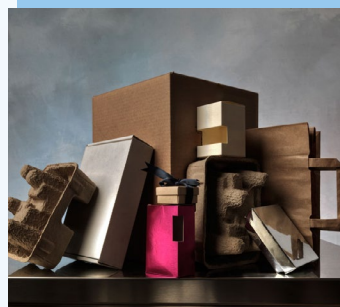


*Si, per imballaggi di piccole dimensioni*

# GERMANY



PLASTIC



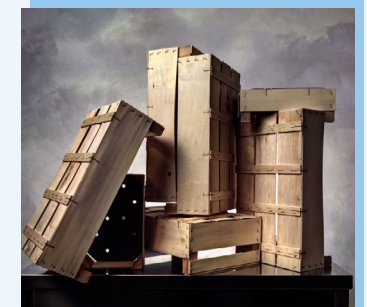
PAPER, CARDBOARD,  
BEVEREDGE CARTONS



GLASS



METALS



WOOD



SOURCE

[link](#)

MANDATORY

**NO**

DIGITAL LABELLING

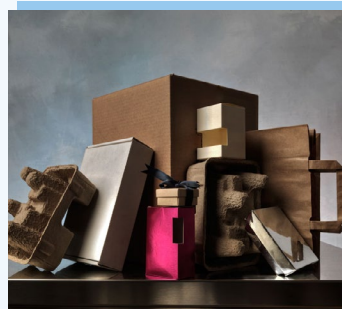




# ISRAEL



PLASTIC



PAPER, CARDBOARD,  
BEVEREDGE CARTONS



GLASS



METALS



WOOD



SOURCE



MANDATORY

**NO**

DIGITAL LABELLING



# ITALY MANDATORY

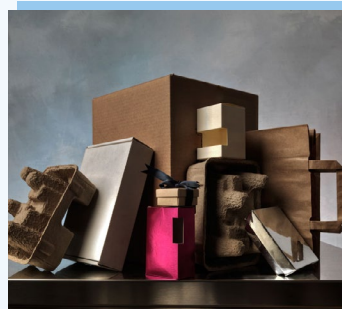


PLASTIC

PET 1

LDPE 4

RACCOLTA PLASTICA



PAPER, CARDBOARD,  
BEVEREDGE CARTONS

PAP 21

RACCOLTA CARTA



GLASS

GL 71

VETRO



METALS

ALU 41

RACCOLTA ALLUMINIO O METALLO



WOOD

FOR 50

LEGNO

RACCOLTA DIFFERENZIATA

SOURCE

link

MANDATORY

YES

DIGITAL LABELLING



# ITALY NOT MANDATORY



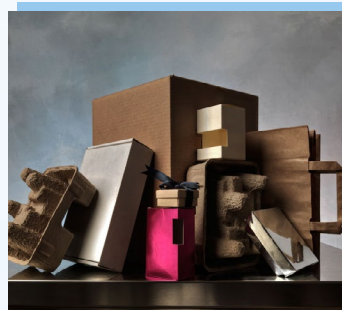
## PLASTIC

VASCHETTA

PELLICOLA



Verifica le disposizioni del tuo Comune.  
Separa la pellicola dalla vaschetta



## PAPER, CARDBOARD, BEVERAGE CARTONS

ASTUCCIO



Verifica le disposizioni del tuo Comune.  
Svuota l'imballaggio del suo contenuto prima di conferirlo in raccolta.  
Riduci il volume dell'astuccio



## GLASS

BOTTIGLIA



Verifica le disposizioni del tuo Comune.  
Separa le componenti e conferiscile in modo corretto.

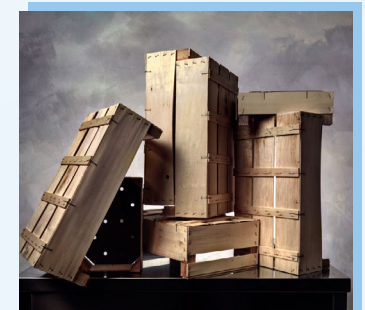


## METALS

LATTINA



Verifica le disposizioni del tuo Comune.  
Conferisci in raccolta il contenitore vuoto.



## WOOD

CASSETTA



Verifica le disposizioni del tuo Comune come conferire questo imballaggio all'isola ecologica.

### SOURCE

link

### MANDATORY

NO

### DIGITAL LABELLING



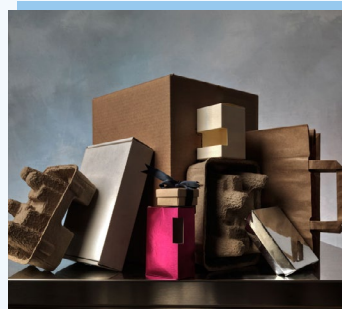
# LATVIA



**PLASTIC**



Abbreviation	Numbering
PET	1
HDPE	2
PVC	3
LDPE	4
PP	5
PS	6



**PAPER, CARDBOARD, BEVEREDGE CARTONS**



Abbreviation	Numbering
PAP	20
PAP	21
PAP	22



**GLASS**



Abbreviation	Numbering
GL	70
GL	71
GL	72



**METALS**



Abbreviation	Numbering
FE	40
ALU	41



**WOOD**



Abbreviation	Numbering
FOR	50
FOR	51

**SOURCE**



**MANDATORY**

**NO**

**DIGITAL LABELLING**



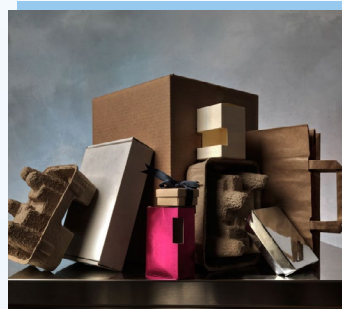
# NORWAY



PLASTIC



Sorteres som plast



PAPER, CARDBOARD, BEVEREDGE CARTONS



Sorteres som drikkekartong



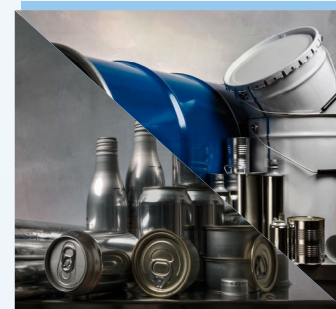
Sorteres som kartong



GLASS



Sorteres som glass



METALS



Sorteres som metall



WOOD



SOURCE

link

MANDATORY

NO

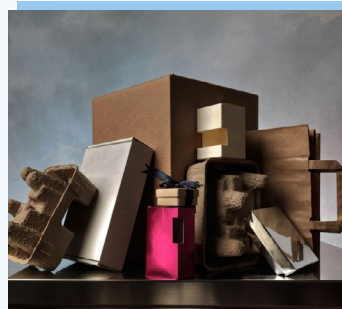
DIGITAL LABELLING



# NETHERLANDS



PLASTIC



PAPER, CARDBOARD,  
BEVEREDGE CARTONS



GLASS



METALS



WOOD



SOURCE



MANDATORY

NO

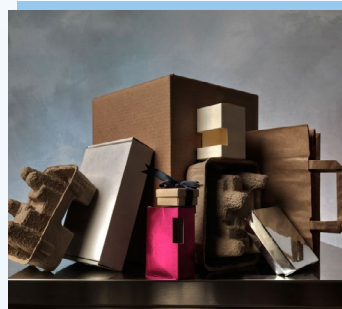
DIGITAL LABELLING



# POLAND



PLASTIC



PAPER, CARDBOARD,  
BEVEREDGE CARTONS



GLASS



METALS



WOOD



SOURCE



MANDATORY

NO

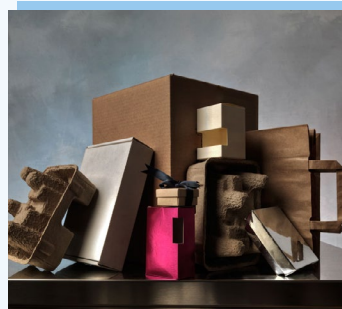
DIGITAL LABELLING



# PORTUGAL



PLASTIC



PAPER, CARDBOARD, BEVERAGE CARTONS



GLASS



METALS



WOOD



SOURCE



MANDATORY

NO

DIGITAL LABELLING

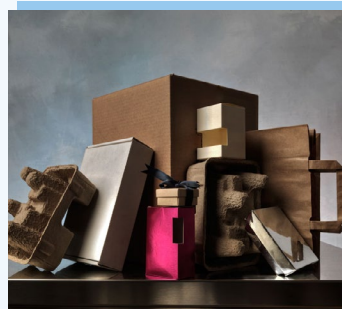




# UNITED KINGDOM



PLASTIC



PAPER, CARDBOARD,  
BEVEREDGE CARTONS



GLASS



METALS



WOOD



SOURCE



MANDATORY

**NO**

DIGITAL LABELLING



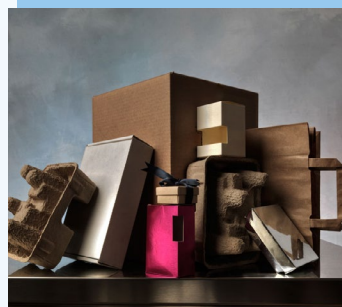
# SLOVENIA



**PLASTIC**



Abbreviation	Numbering
PET	1
HDPE	2
PVC	3
LDPE	4
PP	5
PS	6



**PAPER, CARDBOARD, BEVEREDGE CARTONS**



Abbreviation	Numbering
PAP	20
PAP	21
PAP	22



**GLASS**



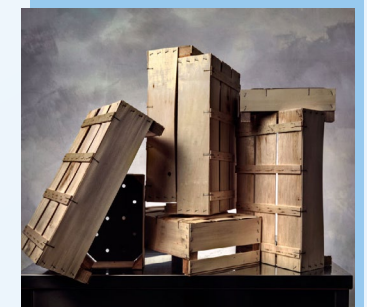
Abbreviation	Numbering
GL	70
GL	71
GL	72



**METALS**



Abbreviation	Numbering
FE	40
ALU	41



**WOOD**



Abbreviation	Numbering
FOR	50
FOR	51

**SOURCE**



**MANDATORY**

**NO**

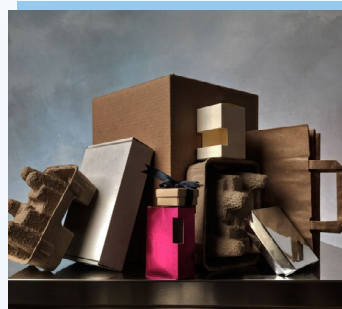
**DIGITAL LABELLING**



# SPAIN



PLASTIC



PAPER, CARDBOARD,  
BEVEREDGE CARTONS



GLASS



METALS



WOOD



SOURCE



MANDATORY

**YES\***

DIGITAL LABELLING

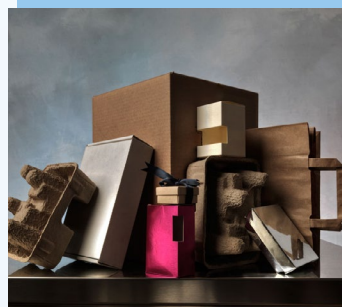


\*Starting from 1st of January 2025

# SWEDEN



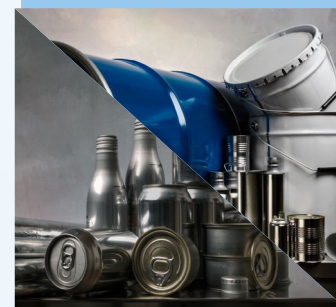
PLASTIC



PAPER, CARDBOARD,  
BEVEREDGE CARTONS



GLASS



METALS



WOOD



SOURCE



MANDATORY

**NO**

DIGITAL LABELLING

