



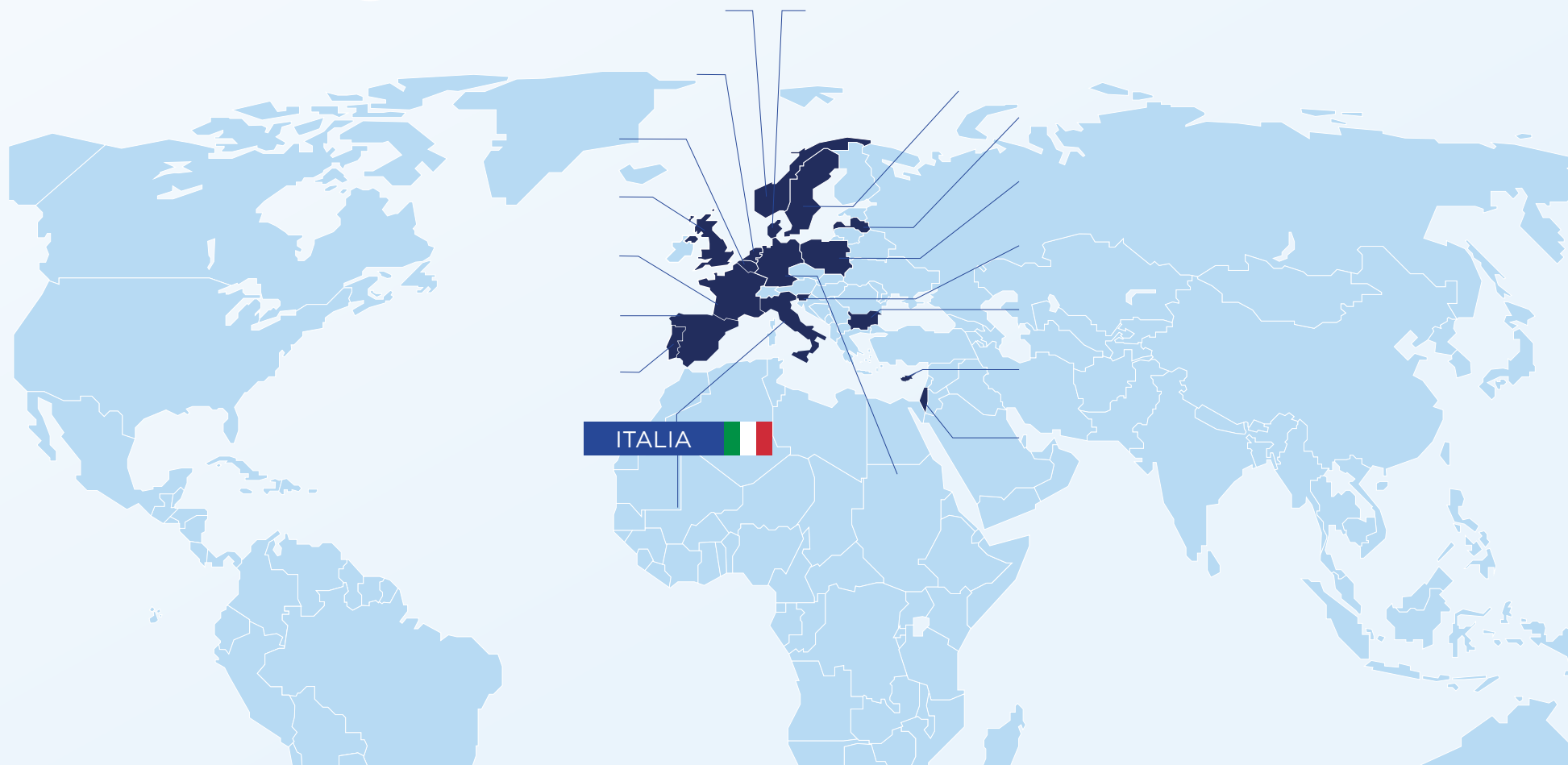
ETICHETTATURA SULL'IMBALLAGGIO AI FINI DELLA RACCOLTA DIFFERENZIATA

22 FEBBRAIO 2023

ANALISI PER PAESE



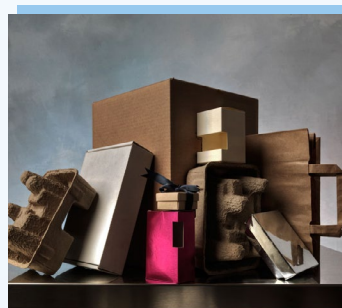
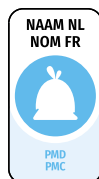
Seleziona un paese sulla mappa



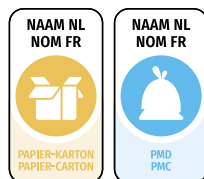
BELGIO



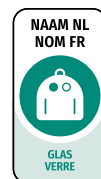
PLASTICA



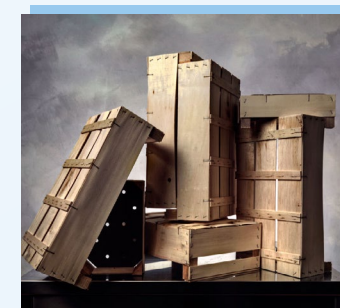
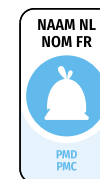
CARTA - CARTONE
CARTONI PER BEVANDE



VETRO



METALLI



LEGNO



FONTE



OBBLIGATORIA

NO

ETICETTATURA DIGITALE

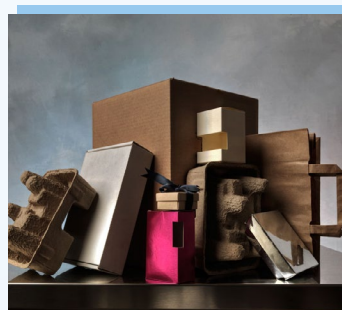


BULGARIA



PLASTICA

Abbreviation	Numbering
PET	1
HDPE	2
PVC	3
LDPE	4
PP	5
PS	6



**CARTA - CARTONE
CARTONI PER BEVANDE**

Abbreviation	Numbering
PAP	20
PAP	21
PAP	22



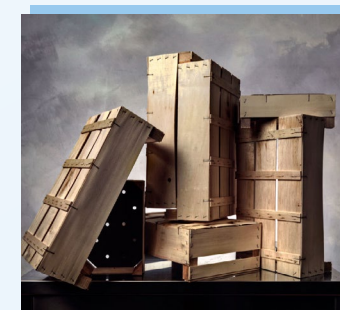
VETRO

Abbreviation	Numbering
GL	70
GL	71
GL	72



METALLI

Abbreviation	Numbering
FE	40
ALU	41



LEGNO

Abbreviation	Numbering
FOR	50
FOR	51

FONTE



OBBLIGATORIA

SI

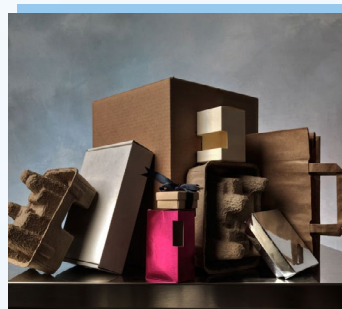
ETICETTATURA DIGITALE



CIPRO



PLASTICA



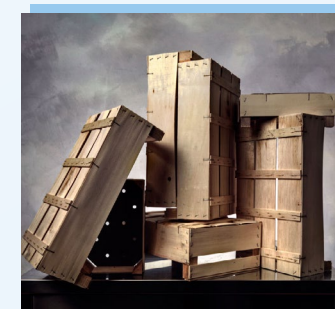
CARTA - CARTONE
CARTONI PER BEVANDE



VETRO



METALLI



LEGNO



FONTE



OBBLIGATORIA

NO

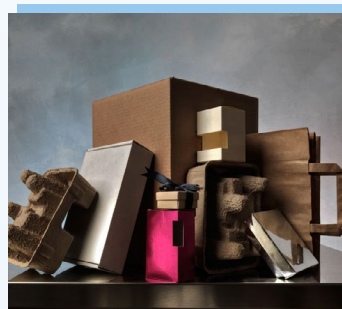
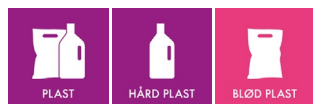
ETICHETTATURA DIGITALE



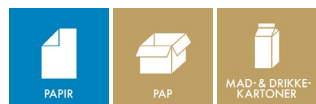
DANIMARCA



PLASTICA



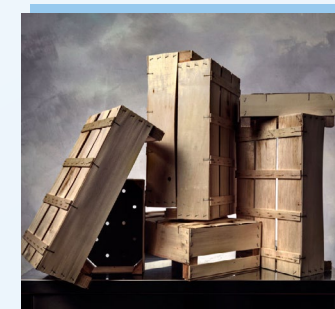
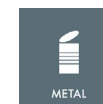
CARTA - CARTONE
CARTONI PER BEVANDE



VETRO



METALLI



LEGNO



FONTE



OBBLIGATORIA

NO

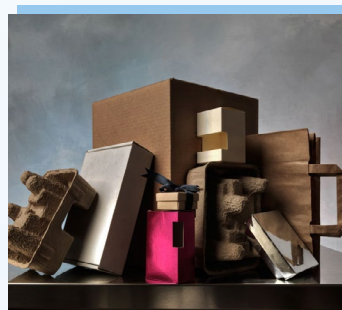
ETICETTATURA DIGITALE



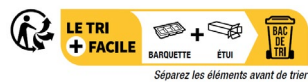
FRANCIA



PLASTICA



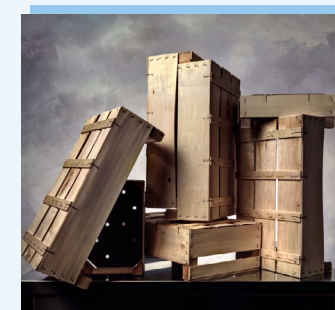
CARTA - CARTONE
CARTONI PER BEVANDE



VETRO



METALLI



LEGNO



FONTE



OBBLIGATORIA

SI

ETICETTATURA DIGITALE

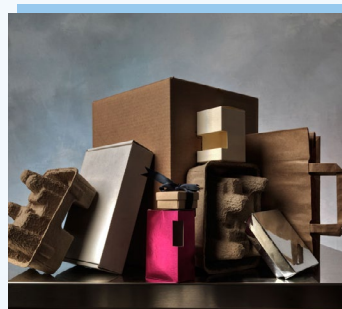


Si, per imballaggi di piccole dimensioni

GERMANIA



PLASTICA



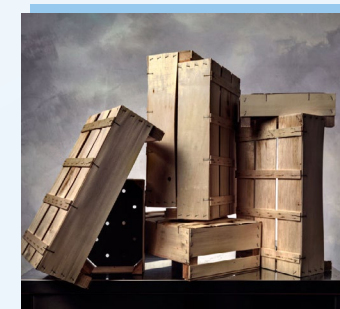
CARTA - CARTONE
CARTONI PER BEVANDE



VETRO



METALLI



LEGNO



FONTE

link

OBBLIGATORIA

NO

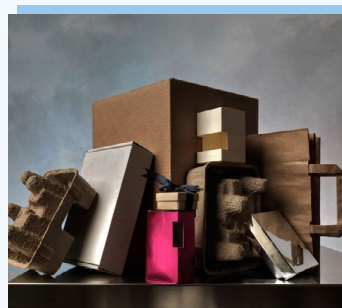
ETICHETTATURA DIGITALE



ISRAELE



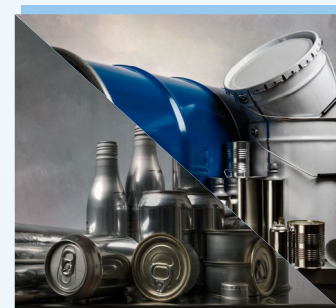
PLASTICA



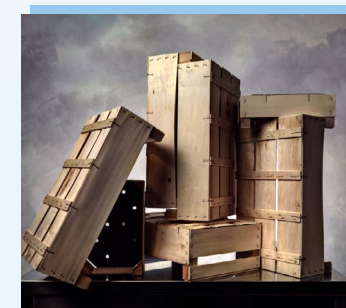
CARTA - CARTONE
CARTONI PER BEVANDE



VETRO



METALLI



LEGNO



FONTE



OBBLIGATORIA

NO

ETICHETTATURA DIGITALE



ITALIA

OBBLIGATORIA

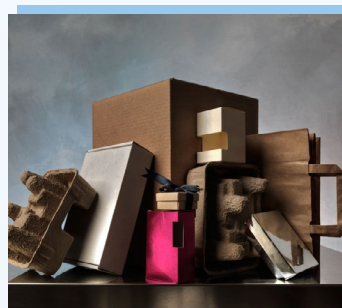


PLASTICA

PET 1

LDPE 4

RACCOLTA PLASTICA



CARTA - CARTONE
CARTONI PER BEVANDE

PAP 21

RACCOLTA CARTA



VETRO

GL 71

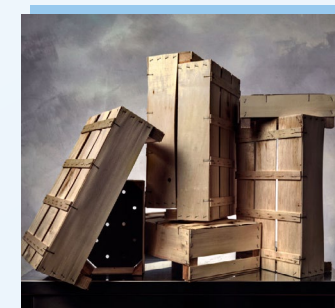
VETRO



METALLI

ALU 41

RACCOLTA ALLUMINIO O METALLO



LEGNO

FOR 50

LEGNO

RACCOLTA DIFFERENZIATA

FONTE

link

OBBLIGATORIA

SI

ETICHETTATURA DIGITALE



ITALIA NON OBBLIGATORIA



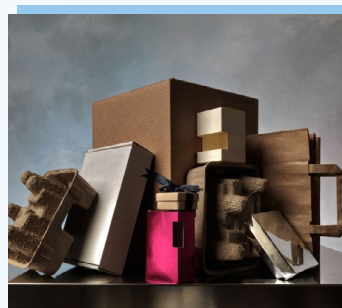
PLASTICA

VASCHETTA

PELLICOLA



Verifica le disposizioni del tuo Comune.
Separa la pellicola dalla vaschetta



CARTA - CARTONE CARTONI PER BEVANDE

ASTUCCIO



Verifica le disposizioni del tuo Comune.
Svuota l'imballaggio del suo contenuto prima di
conferirlo in raccolta.
Riduci il volume dell'astuccio



VETRO

BOTTIGLIA



Verifica le disposizioni del tuo Comune.
Separa le componenti e conferiscile in modo corretto.

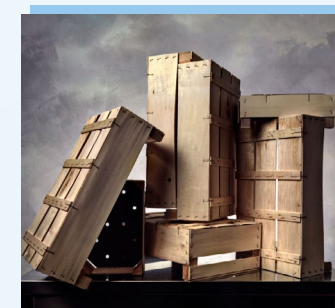


METALLI

LATTINA



Verifica le disposizioni del tuo Comune.
Conferisci in raccolta il contenitore vuoto.



LEGNO

CASSETTA



Verifica le disposizioni del tuo Comune come
conferire questo imballaggio all'isola ecologica.

FONTE

link

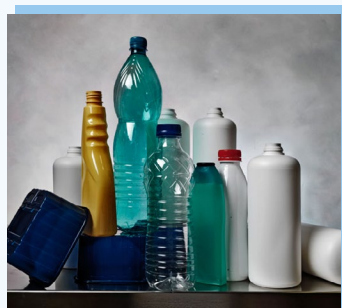
OBBLIGATORIA

NO

ETICHETTATURA DIGITALE



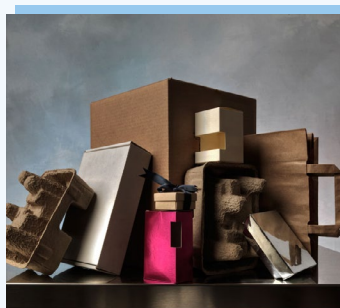
LETTONIA



PLASTICA



Abbreviation	Numbering
PET	1
HDPE	2
PVC	3
LDPE	4
PP	5
PS	6



**CARTA - CARTONE
CARTONI PER BEVANDE**



Abbreviation	Numbering
PAP	20
PAP	21
PAP	22



VETRO



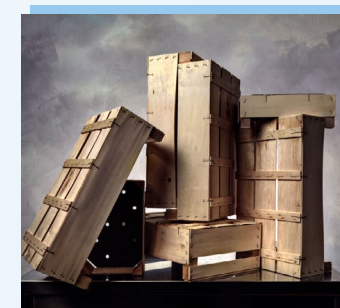
Abbreviation	Numbering
GL	70
GL	71
GL	72



METALLI



Abbreviation	Numbering
FE	40
ALU	41



LEGNO



Abbreviation	Numbering
FOR	50
FOR	51

FONTE



OBBLIGATORIA

NO

ETICETTATURA DIGITALE



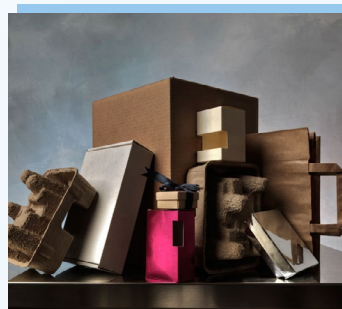
NORVEGIA



PLASTICA



Sorteres som plast



CARTA - CARTONE
CARTONI PER BEVANDE



Sorteres som drikkekartong



Sorteres som kartong



VETRO



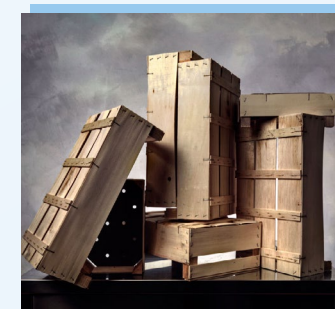
Sorteres som glass



METALLI



Sorteres som metall



LEGNO



FONTE

[link](#)

OBBLIGATORIA

NO

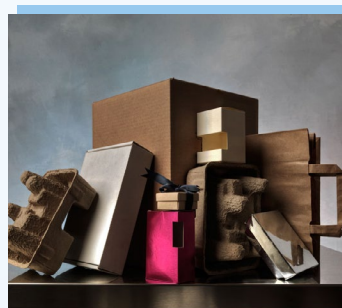
ETICHETTATURA DIGITALE



OLANDA



PLASTICA



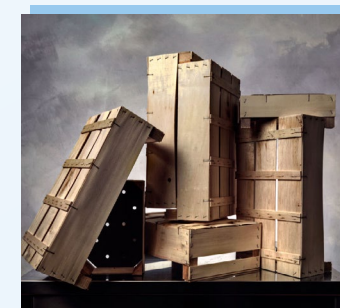
CARTA - CARTONE
CARTONI PER BEVANDE



VETRO



METALLI



LEGNO



FONTE

[link](#)

OBBLIGATORIA

NO

ETICHETTATURA DIGITALE



POLONIA



PLASTICA



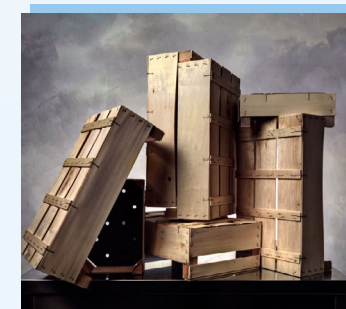
CARTA - CARTONE
CARTONI PER BEVANDE



VETRO



METALLI



LEGNO



FONTE

link

OBBLIGATORIA

NO

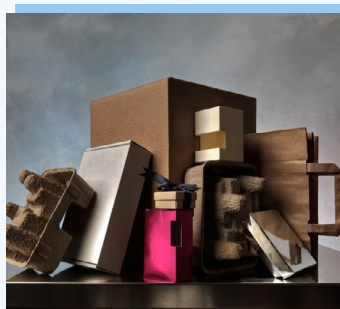
ETICETTATURA DIGITALE



PORTOGALLO



PLASTICA



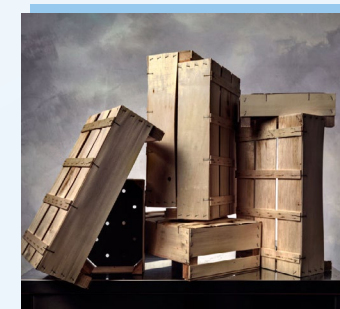
CARTA - CARTONE
CARTONI PER BEVANDE



VETRO



METALLI



LEGNO



FONTE

[link](#)

OBBLIGATORIA

NO

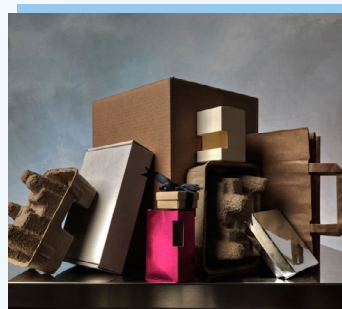
ETICETTATURA DIGITALE



REGNO UNITO



PLASTICA



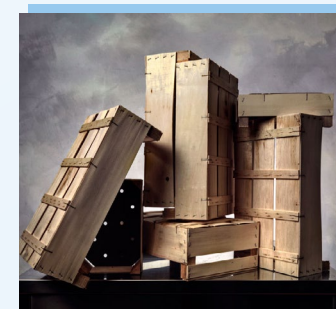
CARTA - CARTONE
CARTONI PER BEVANDE



VETRO



METALLI



LEGNO



FONTE



OBBLIGATORIA

NO

ETICETTATURA DIGITALE



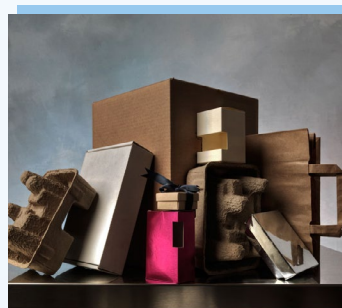
SLOVENIA



PLASTICA



Abbreviation	Numbering
PET	1
HDPE	2
PVC	3
LDPE	4
PP	5
PS	6



**CARTA - CARTONE
CARTONI PER BEVANDE**



Abbreviation	Numbering
PAP	20
PAP	21
PAP	22



VETRO



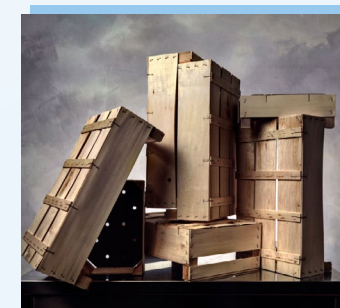
Abbreviation	Numbering
GL	70
GL	71
GL	72



METALLI



Abbreviation	Numbering
FE	40
ALU	41



LEGNO



Abbreviation	Numbering
FOR	50
FOR	51

FONTE



OBBLIGATORIA

NO

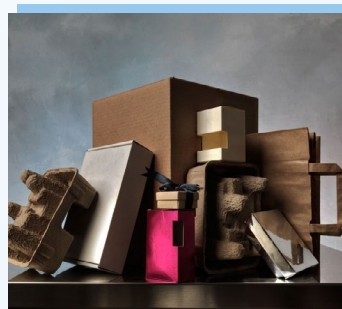
ETICETTATURA DIGITALE



SPAGNA



PLASTICA



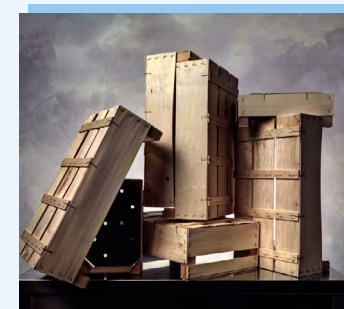
CARTA - CARTONE
CARTONI PER BEVANDE



VETRO



METALLI



LEGNO



FONTE

link

OBBLIGATORIA

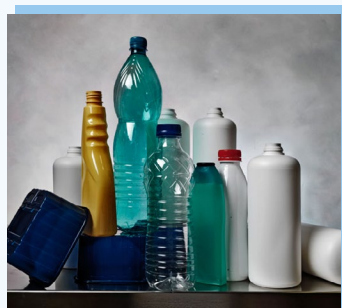
SI*

ETICHETTATURA DIGITALE

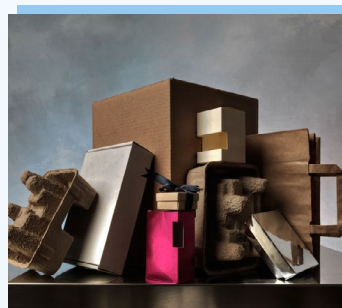


* A partire da Gennaio 2025

SVEZIA



PLASTICA



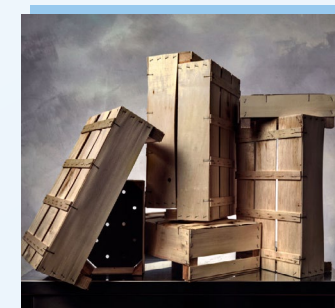
CARTA - CARTONE
CARTONI PER BEVANDE



VETRO



METALLI



LEGNO



FONTE



OBBLIGATORIA

NO

ETICHETTATURA DIGITALE

